



AF ONE ESSENTIAL KIT

POWERED BY STYLE ITALIANO ENDODONTICS



24,90€ + ΦΠΑ
4+1 ΔΩΡΟ!



Photo courtesy of Orestis Charalambous



ΦΛΩΡΟΣ DENTAL^{plus}

Εγνατία 88, Θεσσαλονίκη - Τηλ 2310 224203
www.florosdental.gr - info@florosdental.gr



AF BLUE ROTARY

4% & 6% #15-40

24,90€+φπα(6τεμ)

4+1 δώρο

S4 KIT

(12/17,05/18,06/25,04/25)

21.40€+φπα



V-TAPER GOLD

SX-F3

23,80€ + φπα (6τεμ)

4+1 δώρο



C-PATH FILES

2% 13, 16, 19

24,9€ +φπα (6τεμ)

4+1 δώρο



AF R3 RECIPROC

06/20, 06/25, 06/40

21,40€ + φπα (3τεμ)

4+1 δώρο



AF ROTARY

ΚΙΤ 08/17, 02/19, 04/20

04/25, 04/30

23,80€ + φπα

μεμον. 24,9€ +φπα (6τεμ)

4+1 δώρο



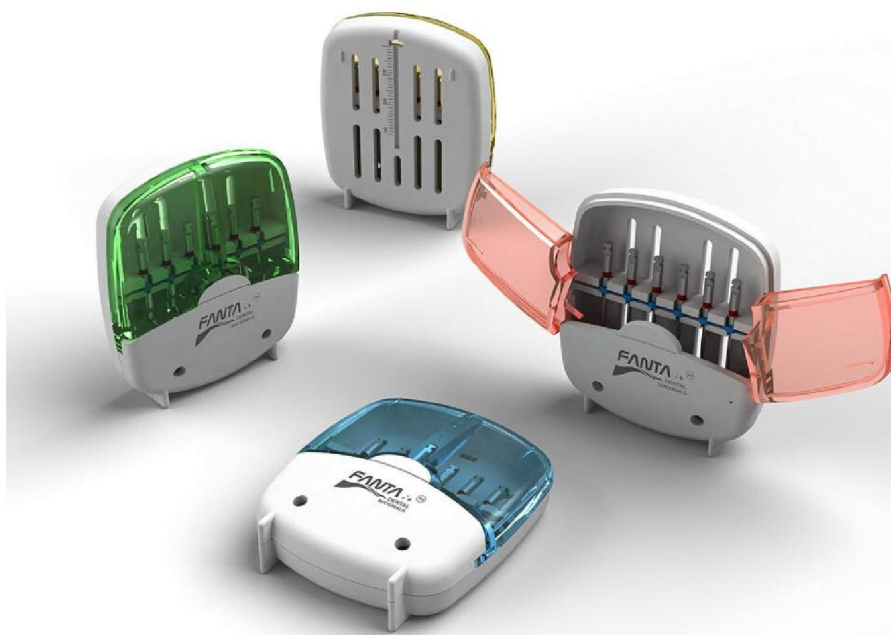
AF BABY FILES

Ρίνες 16mm

08/17, 04/20, 04/25, 04/30

23,8€ + φπα

4+1 δώρο



AF MAX

Cleaning instrument

1 εργαλείο #25

11€ + φπα (13,65€)

3+1 δώρο



AF RETREATMENT

18€ + φπα (22,30€)

3+1 δώρο

ΒΕΛΟΝΕΣ ΔΙΑΚΛΥΣΜΟΥ

Με stopper, προλυγισμένες,

τυφλού άκρου, 2 οπών

30g/22mm, 30g/26mm

0.55€+φπα/τεμ.

-20% στα 100 τεμ.



ΠΙΝΕΣ ΧΕΙΡΟΣ

C FLEX

(για πολύ στενούς,
ενασβεστωμένους ή πολύ
κεκαμένους ρ.σ.)

Κ & Η FILES

6,50€ + φπα (6τεμ)

-20% στα 10 πακέτα

PLUGGERS SS/Ni-Ti

4 μεγέθη

24,90€+φπα/τεμ.

3+1 δώρο



MICRO OPENERS & FINISHERS

3 Μεγέθη

30€ + φπα/σετ

-15%





C-PATH ROTARY

- AF™ - L WIRE TECH •
- RESPECT TO THE CANAL ANATOMY •
- GLIDE PATH MANAGEMENT •

SINGLE SIZE	21MM	25MM	31MM	TAPER	SIZE	
C-Path 13/02	F21 2602 021 013	F21 2602 025 013	F21 2602 031 013	02	#13	●
C-Path 16/02	F21 2602 021 016	F21 2602 025 016	F21 2602 031 016	02	#16	○
C-Path 19/02	F21 2602 021 019	F21 2602 025 019	F21 2602 031 019	02	#19	●

(6pcs/box)

ASSORTED	21MM	25MM	31MM
Open File + 13/02 + 16/02 + 19/02	F21 1402 021 000	F21 1402 025 000	F21 1402 031 000

(4pcs/box)

V-TAPER™ GOLD ROTARY

- VARIABLE TAPER 6 FILES DESIGN
- 3 SHAPING FILES, 3 FINISHING FILES
- AF-R WIRE TECH FOR SHAPING FILES, AF-H WIRE TECH FOR FINISHING FILES

SINGLE SIZE	21MM	25MM	31MM	TAPER	SIZE	
SX		V02 2604 016 019		04 vt	#19	●
S1	V02 2602 021 018	V02 2602 025 018	V02 2602 031 018	02 vt	#18	●
S2	V02 2604 021 020	V02 2604 025 020	V02 2604 031 020	04 vt	#20	●
F1	V02 2607 021 020	V02 2607 025 020	V02 2607 031 020	07 vt	#20	●
F2	V02 2608 021 025	V02 2608 025 025	V02 2608 031 025	08 vt	#25	●
F3	V02 2609 021 030	V02 2609 025 030	V02 2609 031 030	09 vt	#30	●



ENDODONTIC SOLUTION **FANTA** DENTAL MATERIALS
PROFESSIONAL | PRECISELY | RELIABLE

AF™ ROTARY

- AF™ - H WIRE TECH
- TRIANGLE CROSS SECTION
- RESPECT TO THE CANAL ANATOMY
- 04, 06 TAPER DESIGN
- SUITABLE FOR CURVED CANALS



SINGLE SIZE	21MM	25MM	31MM	TAPER	SIZE	
20/04	A03 2604 021 020	A03 2604 025 020	A03 2604 031 020	04	#20	●
25/04	A03 2604 021 025	A03 2604 025 025	A03 2604 031 025	04	#25	●
35/04	A03 2604 021 030	A03 2604 025 030	A03 2604 031 030	04	#30	●

(6pcs/box)

AF™ BABY ROTARY

- AF™ - H WIRE TECH
- TRIANGLE CROSS SECTION
- SPECIALLY DESIGN FOR CHILDREN
- 04, 06 TAPER, 16MM LENGTH DESIGN



ASSORTED	16MM
Open File + 20/04 + 25/04 + 30/04	A06 1404 016 000
Open File + 20/04 + 25/06 + 30/04	A06 1406 016 000

(4pcs/box)

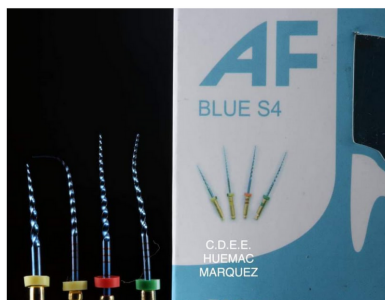
AF™ BLUE ROTARY

- AF™ - H WIRE TECH
- TRIANGLE CROSS SECTION
- RESPECT TO THE CANAL ANATOMY
- WIDE RANGE OF SIZES FOR CHOICE
- S4 IS A SPECIAL SEQUENCE SUITABLE FOR MOST OF THE CASES



SINGLE SIZE	21MM	25MM	31MM	TAPER	SIZE	
15/04	A04 2604 021 015	A04 2604 025 015	A04 2604 031 015	04	#15	●
20/04	A04 2604 021 020	A04 2604 025 020	A04 2604 031 020	04	#20	●
25/04	A04 2604 021 025	A04 2604 025 025	A04 2604 031 025	04	#25	●
30/04	A04 2604 021 030	A04 2604 025 030	A04 2604 031 030	04	#30	●
35/04	A04 2604 021 035	A04 2604 025 035	A04 2604 031 035	04	#35	●
40/04	A04 2604 021 040	A04 2604 025 040	A04 2604 031 040	04	#40	●
15/06	A04 2606 021 015	A04 2606 025 015	A04 2606 031 015	06	#15	●
20/06	A04 2606 021 020	A04 2606 025 020	A04 2606 031 020	06	#20	●
25/06	A04 2606 021 025	A04 2606 025 025	A04 2606 031 025	06	#25	●
30/06	A04 2606 021 030	A04 2606 025 030	A04 2606 031 030	06	#30	●
35/06	A04 2606 021 035	A04 2606 025 035	A04 2606 031 035	06	#35	●
40/06	A04 2606 021 040	A04 2606 025 040	A04 2606 031 040	06	#40	●

(6pcs/box)



AF™ BLUE S4 KIT

ASSORTED	21MM	25MM	31MM
Open File + Path File + 25/06 + 35/04	A04 1400 021 000	A04 1400 025 000	A04 1400 031 000

(4pcs/box)



AF™ BLUE R3

- RECIPROCATING
- BLUE AF™ - H WIRE TECH
- ONE FILE SYSTEM



SINGLE SIZE	21MM	25MM	31MM	TAPER	SIZE	
R3 - R1	A05 2306 021 020	A05 2306 025 020	A05 2306 031 020	06	#20	●
R3 - R2	A05 2306 021 025	A05 2306 025 025	A05 2306 031 025	06	#25	●
R3 - R3	A05 2306 021 040	A05 2306 025 040	A05 2306 031 040	06	#40	●

(3pcs/box)

AF MAX

-Cleaning Finisher Rotary File

FEATURES:

- *Cleaning Finisher File
- *Remove Smear Layer efficiently
- *Maximally reserve the dentine



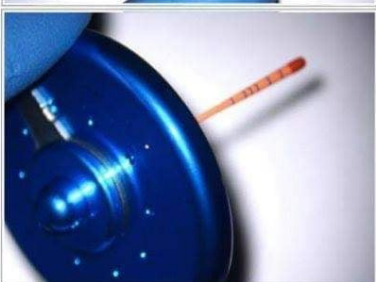
AF™ RETREATMENT ROTARY

SINGLE SIZE	PN	TAPER	SIZE	
Retreatment File 1	F09 2607 025 020	07	#20	Yellow
Retreatment File 2	F09 2608 021 025	08	#25	Red
Retreatment File 3	F09 2609 019 030	09	#30	Blue

(6pcs/box)

ASSORTED	31MM
20/07+25/08+30/09	F09 1300 000 000

(3pcs/box)

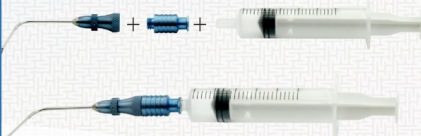


ΕΡΓΑΛΕΙΟ ΑΦΑΙΡΕΣΗΣ ΣΠΑΣΜΕΝΩΝ ΕΡΓΑΛΕΙΩΝ MICRO TWEEZER ZUMAX



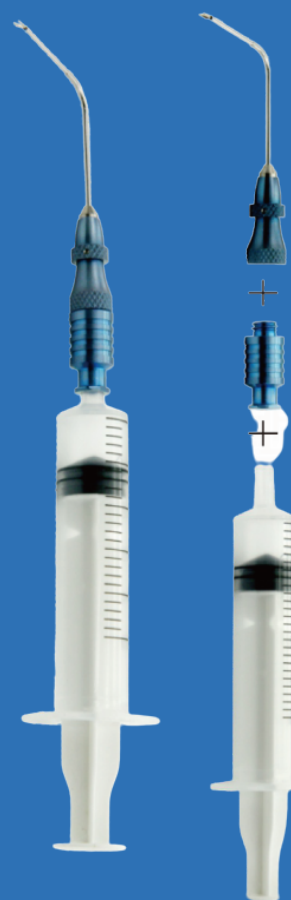
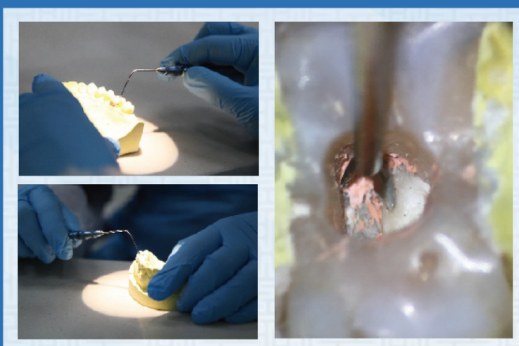
Specification: φ0.9mm×20mm

A package includes
tweezer head x1,
handle x1,
cleaning adapter x1



Advantages:

- ★ 360° adjustment easily
- ★ The shape of head is designed for clamping easily
- ★ It is able to accurate clamping foreign matters with strong clamping power, high stability and reliability.



zumax



Special Offer



Five Reciprocation Modes (MO)



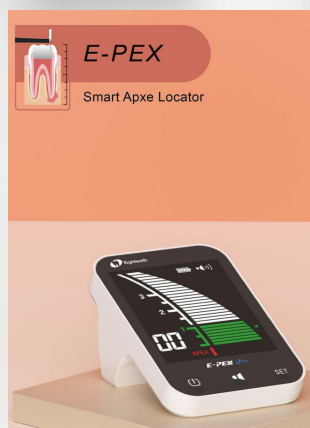
Reverse Reciprocation-One Mode
Counter clockwise & clockwise movement

Fwd 30° - Rev 150°
For reciprocating files



Forward Reciprocation-Four Modes
Clockwise & counter clockwise movement

Fwd 150° - Rev 30° Fwd 180° - Rev 30°
Fwd 210° - Rev 30° Fwd 250° - Rev 30°
For all continuous rotation files



E-CONNECT

Cordless Endo Motor





E-connect S

Endomotor With Built-in
Apex Locator



Torque Calibration
For precise torque output



OLED Screen
Digital OLED Display



Ambidextrous Display
Screen can be rotated as per
Left or right hand use



Powerful Battery
Heavy duty 1500mAh
Lithium battery



APEX LOCATOR

Apical control with rotary instruments

Position of file is displayed on screen and the motor rotates in reverse direction when file reaches pre-set apical working length, to prevent over instrumentation

Manual canal measurement

Manual file clip can be used to measure canals precisely with hand files

Multi frequency technology with high accuracy & precision

Apex locator flash bar with zoom-in function

Working Modes:

FWD - Clockwise Continuous Rotation

REV - Anti-clockwise Continuous Rotation

REC - Reciprocation Movement

First-in-class cordless open motor with adjustable angles of rotation ranging from 30° to 370° for reciprocation as per user's need

First-in-class feature of speed adjustment in reciprocation mode

ATC - Adaptive Torque Control

ATC manages the file stress in a smart way. When torque limit is reached, instead of going into reverse mode, motor reciprocates till the stress is reduced. Once back to below pre-set torque level, file will again rotate in continuous rotation

Integrated mode features:

• Auto Start & Stop - Motor starts working when the file enters inside root canal, and stops when withdrawn

• Apical Reverse - When the file reaches pre-set apical reverse point, user can define whether the file starts moving in reverse direction

• Apical Slow Down - To preserve the cemento-dental junction and avoid file separation, speed of motor slows down when file is in apical region

Specifications:

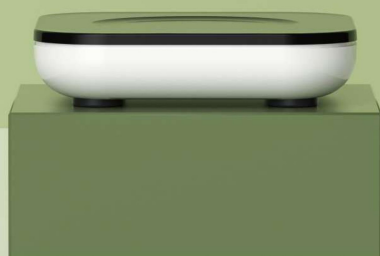
Rotational Speed Range : 120-1000 rpm
Torque Range : 0.5-4.0 N.cm
Memory Programs : 11 (M0 to M10)
Battery Capacity : 1500 mAh



AirPex

Wireless Apex Locator

International Patent
No.: PCT/CN2019/110429



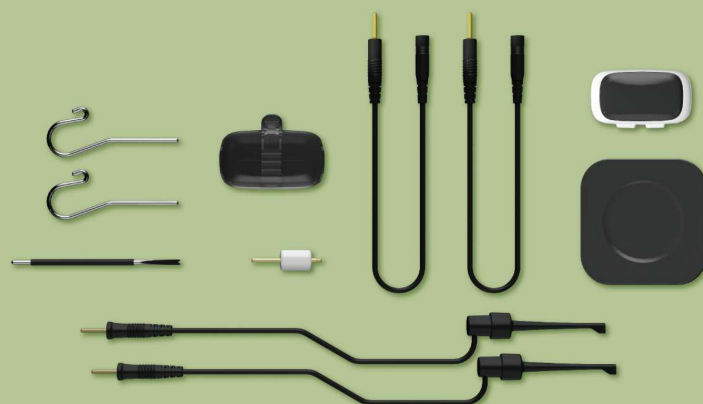
Feel the Charm of Wireless Charging

Lay it down , Charge it up
Charging is as simple as placing
the AirPex on the charging base



True Wireless Apex Locator

Get rid of the wire to the fullest
Use without magnet wire
Accuracy through wirelessness





Fast-Pack

Obturation Pack
Handpiece



Temperature Range

- Wide temperature range of 90° to 250°
- Five memory programs to customize temperature and cut-off time as per obturation material used or any other intended use of the device



Internally Heated Tip

- Only the working end (4 - 6 mm) of the tip is heated - avoids need for insulating sleeves
- The non-working end is insulated and stays cool avoiding soft tissue burn



Class-leading Controlled Heating

- Fast heating - Quick heating prevents PDL damage
- Swift cooling - Swift cooling ensure GP does not follow along the heating tip



Experience Ergonomics

- 360° start / stop ring allows holding the device in any angle comfortable for you
- Left - right handed operation
- Comfortable grip, light in weight



Powerful Battery

- Highly efficient 2600mAh Lithium battery
- Direct Plug & Play - In case of low battery, use the device directly with adaptor

Specifications

Heating Time	0.2 seconds for 200 °C 0.5 seconds for 250 °C
Cooling Time	2 seconds for cooling
Charging Time	2 hours to complete charge
Operating Time	4 hours of continuous operation at 250 °C



Small
(Black)
40/0.025 - 1 Qty



Medium
(Yellow)
50/0.05 - 1 Qty

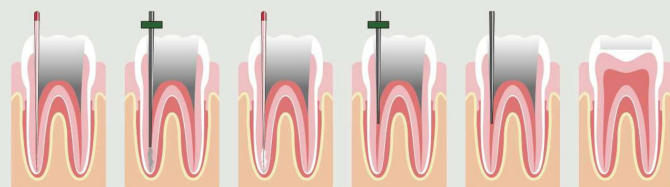


Large
(Blue)
60/0.06 - 1 Qty



Fast-Fill

Obturation Fill
Handpiece



Protocol for Use

Master Cone Verification & Resizing

Select a master cone which corresponds to the master apical preparation. Check for tug-back and confirm the same with radiograph. Resize the GP by cutting it to 0.5 to 1mm short of the working length. This will prevent peri-apical extrusion of the GP

Selection of Fast-Pack & Plugger Tip

Select the Fast-Pack tip which reaches 4-5 mm short of the working length and give a snug fit at the tip. Mark this length using the silicon stopper. Similarly, select the hand plugger which reaches 4-5mm short of the working length

Gutta Percha & Sealer

Coat the master cone apically with the sealer and insert it into the canal. Brush the canal wall using strokes of GP and sealer

Down Pack with Fast-Pack

Remove the GP from the orifice/coronal part with the help of heated Fast-Pack tip. Plug the GP cone with pre-fit hand plugger at the orifice. Now take the heated Fast-Pack tip 4-5mm short of the working length. The bite of GP will come out of the canal along with the tip. Heated Fast-Pack tip will transfer heat to the GP and convert it into thermoplastic state. Condense the GP with the help of hand plugger to ensure the complete sealing of accessory canals and apex

Fill with Fast-Fill

Filling the canal using the Fast-Fill device in increments of 4mm till the canal is filled completely while condensing the warm GP with the appropriate plugger after each increment



UltraMint & UltraMint Pro

All-round Ultrasonic Scaler

All-round Ultrasonic Scaler

Scaling | Periodontic | Endodontic



Working mode
General, Periodontal, Endodontic



Wide Frequency Range
100% compatible with EMS type tips



Sine Wave Drive
Stabilized current output, without reducing instantaneous stimulation, to allow comfortable & painless treatment



Intelligent Negative Feedback
In accordance to different tooth surfaces, it will automatically adjust pattern to the tip, offering a stable and sustained scaling treatment which is comfortable and painless for the patient



autoclavable case



Manage flow control directly by handpiece



Removable and autoclavable handpiece holder, Resist cross-infection



detachable handpiece with LED light



Smart Touch Panel
hassle-free usage even with screen protector file, gloves or water



Foot Switch
Less than 2cm high, making foot-control comfortable



Internal self-cleaning

900ml liquid container, can work directly with sodium hypochlorite, chlorhexidine, hydrogen peroxide and saline



CuringPen

4 LEDs curing light

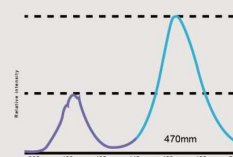
Technical parameter:

Dimension: 24*21*230(mm)
Net Weight: 109g
Lens size: 11mm

Power supply:
>1200 times, 3 Sec
Maximum light intensity



Smart controlling chip
keeps light output consistent
Light intensity:
1000mw/cm², 1500mw/cm², 2300mw/cm²
600 mw/cm²(detect mode)



Wavelength:385-515nm
3 Blue, 1 Violet, 10w LED



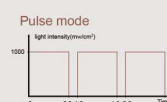
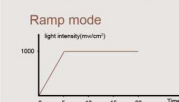
360° rotatable head



Intensity digital display

MO
2300mw/cm² 02s

Multiple Curing Options



Caries detection





NanoPix

Intraoral X-Ray Sensor



1/10 Cost per patient compared to film
3s To complete entire imaging process
50000+ Exposures with no quality loss



Leading technologies : The 1st time in dentistry



AED Technology (Automatic Exposure Detection)

- from chest radiography

- Compatible with almost all DC and AC X-Ray generators

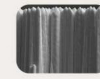
- Digital images comes automatically when your X-Ray is switched on



APS CMOS Technology

- from aerospace industry

- High signal-to-noise ratio with maximum details
- Long life and low power consumption



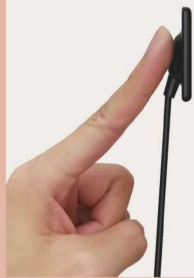
Direct Deposition CSI Technology

- from chest radiography

- Low dose radiation for safety
- Less exposure time but higher resolution

All-in-one

The most economical X-Ray sensor in the world



Unique design



Ergonomic design

Cupped cable connection ensures comfortable finger positioning



Robust cable connection

70000+ Bendings RA test passed



Ultra-thin body design

4.4mm - the thinnest X-Ray sensor

Ultra X

Cordless Ultrasonic Activator

Available Tips

Size	Length(mm)
#20 2%	18 & 21
#25 2%	18 & 21



X Gold
Super Powerful



X Blue
Flexible



X Silver
Soft & Flexible



**Autoclavable
Tips**



**Smooth
Surface
Finish**



**Flexible
Tips**

*Only X Blue & Silver are Flexible Tips



**Multiple Tip
Options**





ADMETEC

*lightweight
high performance*

AquaCare

Dental Air Abrasion & Polishing Unit



AquaCare Twin

Two Chambers, Two Powders.
One Second To Switch Treatments.



AquaCare Single

All The Versatility.
One Procedure At A Time



Daily direct no drilling just AquaCare - Pre-op
fracture & hypomineralised



Daily direct no drilling just AquaCare
Cleaning with AquaCare only
Images Courtesy of Thomas Taha, UK



ΦΛΩΡΟΣ DENTAL^{plus}

Εγνατία 88, Θεσσαλονίκη - Τηλ 2310 224203
www.florosdental.gr - info@florosdental.gr