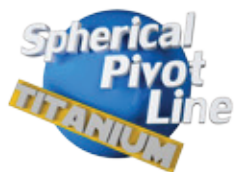


# PIVOTS FOR DIRECT OVERDENTURE



**PIVOT FLEX**  
TITANIUM + TIN  
1600 Vickers Hard  
"self-parallel" sphere



STAINLESS STEEL AND  
TITANIUM HOUSINGS  
Normal / Micro size curing  
welding or bonding



ELASTIC RETENTIVE CAPS  
Normal / Micro



SUPER-RESILIENT CAPS



**TITANIUM  
PIVOT BLOCK**  
(Ø 2,5 mm/Ø 1,8 mm)



**LOW PROFILE  
TITANIUM + TIN PIVOT**  
(over 1600 Vickers)



**PIVOT FLEX**  
TITANIUM + TIN  
Ø 2.5 mm 3 lengths



**PIVOT BLOCK**  
TITANIUM WITH STATIONARY SPHERE  
NORMAL Sphere  
Ø 2.5 mm 3 lengths



**PIVOT BLOCK**  
TITANIUM WITH STATIONARY SPHERE  
MICRO Sphere  
Ø 1.8 mm 3 lengths



**OT EQUATOR PIVOT**  
LOW PROFILE TITANIUM PIVOT  
3 lengths: 10,9,7mm



MOOSER BURS



PROTECTIVE  
DISKS

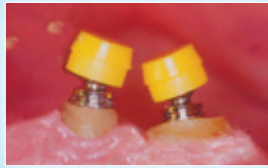
The Pivot Flex line of titanium posts was developed as an economical solution for direct "in root" supported overdentures. The self-aligning Pivot Flex post features a rotating ball with a 2.5 mm diameter and is indicated for divergent roots. When the posts are used with directional rings to align retentive caps before the resin curing stage, the insertion of the denture is easy and trauma-free. The Pivot Block line of milled titanium posts has a stationary ball and can be used for a temporary or as a permanent solution. The Pivot Block titanium posts are available in 2.5 mm and 1.8 mm sphere diameters. The Rhein83 elastic caps ensure optimal retention and function while minimizing wear. There are five levels of retentive caps, including extra resilient caps for precarious root situations. The levels of retention are identified by different colored caps.

### CLINIC

### DIRECTIONAL RINGS - FOR FIXED AND ROTATING SPHERES



Pivot Flex posts in divergent roots.



Nylon caps without directional rings. Caps are not supported in the same horizontal plane.



Nylon caps with directional rings. Caps are now supported in the same horizontal plane.

#### DIRECTIONAL RINGS



### PIVOT BLOCK - FOR TEMPORARY OR PERMANENT ECONOMICAL SOLUTIONS



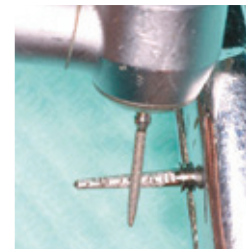
Pivot Block cemented with oxyphosphate cement for a temporary solution.



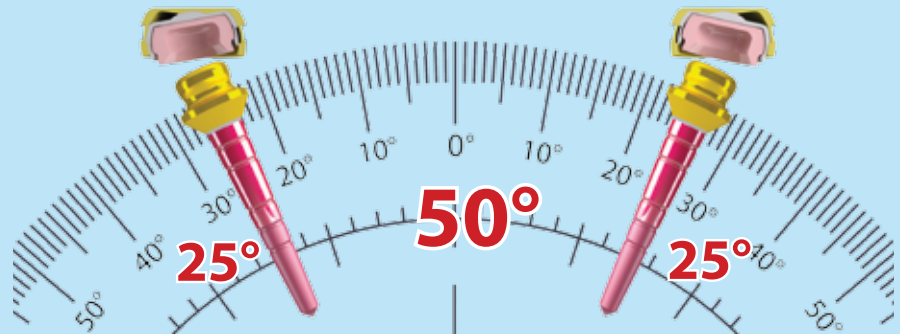
To remove the post from the root, grasp the sphere with the pliers and rotate carefully in both directions.



Due to the conical shape and smooth surface, the post is removed easily.



For permanent solutions, create notches in the post and roughen the surface before cementation.



Thanks to the use of the **OT EQUATOR Smartbox** housing, it's possible to correct divergency up to 50 degrees.

### TITANIUM PIVOT BLOCK AND OT EQUATOR: PERMANENT FIXATION IN THE PATIENT'S MOUTH



Prepare the root by the mucosal level and adjust the radicular cavity by using a Mooser Bur with the proper dimensions.



Fill-up the radicular cavities with proper composite cements, insert than the spherical titanium pivots.



Cemented micro block pivot in position, retentive notches were applied to support the permanents fixation.



Place the directional rings in position between the roots and retentive caps. Proceed by taking the imprint.



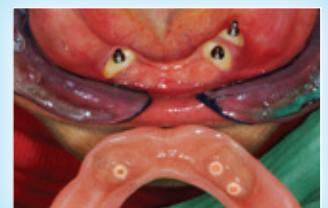
Alginate impression: attachment placements in evidence.



Place the protective disks between the directional rings and the retentive caps. Feel with self curing resin and then place the prosthesis in the patient's mouth.



When the resin will be hard enough remove the protective disk and clean up any excess of resin.



Completed prosthesis.