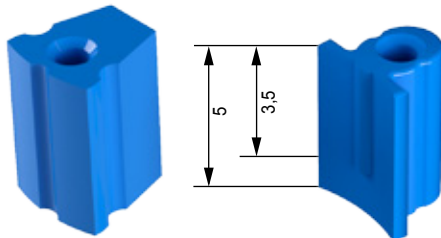


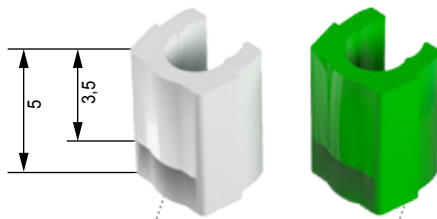
EXTRACORONAL CASTABLE ATTACHMENTS

OT VERTICAL

CASTABLE TWIN CYLINDER ATTACHMENT
with centering and balancing pin



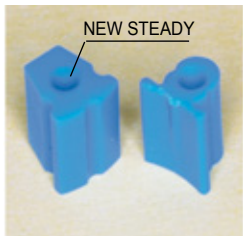
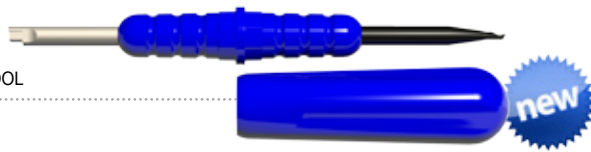
OPTIONAL STEADY



WHITE CLIP
Standard Retention

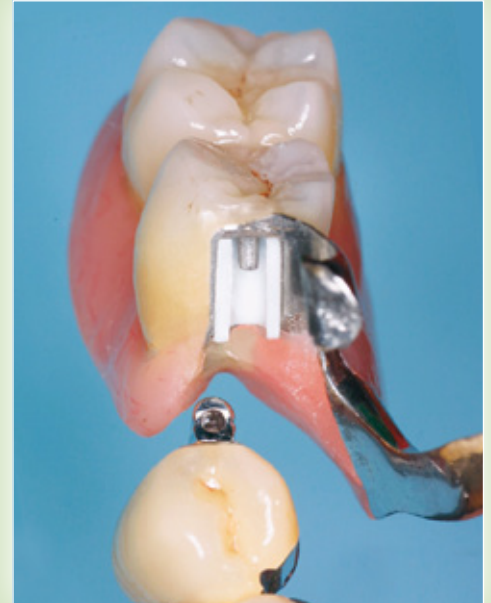
GREEN CLIP
Soft Retention

OT VERTICAL CLIPS
INSERTER/EXTRACTOR TOOL

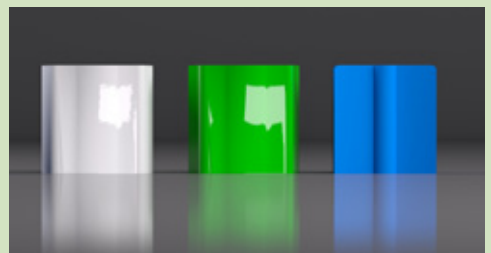


The cast metal guide pin is necessary to center, connect and balance the prosthesis during the final insertion. When milling or "cross arch" stabilization are not possible, the guide pin along with the **NEW STEADY** will provide lateral stability to the prosthesis. This ensures a longer life for the retentive clips. The vertical height of the attachment can be adjusted by reducing both male and female parts from the original length of 5 mm down to 3.5 mm according to the pre-marked notches. Reducing the vertical height creates no difference in functionality. Removal and replacement of clips can be easily performed by the Dentist chairside.

LABORATORY



The ot vertical attachments and retentive clips can be lowered in height, in order not to risk inconveniences, it is advisable not to shorten them beyond the indicative sign * of 3.5 mm.



TECHNIQUE: SINGLE CASTABLE MALE ASSEMBLY



Parallelometer Key: insert the plug into the hole of the attachment, rotate a few times to obtain the correct seal and be able to slide it out comfortably after fixing the attachment in the wax.



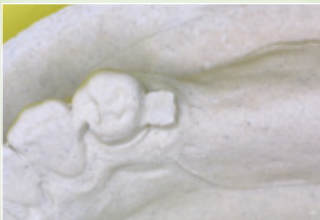
Completed the assembly and the wax modeling, close the hole with wax and create a lingual drilling, proceed with the sprue of the product.



Crowns with cast connection, finished and polished milling.



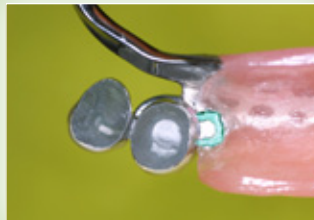
Retentive clip inserted on the cylindrical male. Waxed model (be careful not to dirty the coping with wax before duplication).



Duplicate model in coating with reproduction of the clip format.



Melted and sanded framework.



Finished work, green retentive clip inserted into the framework.



Work finished.

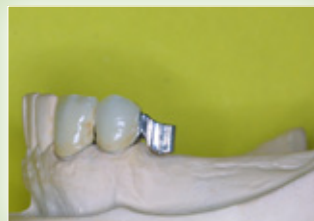
TECHNIQUE: CALSTABLE MALE + STEADY ASSEMBLY



Parallelometer key: insert the plug into the hole of the adapted Steady to follow the mucous profile, rotate to remove the key after fixing it.



Place the Ot Vertical male gluing it lingually to the Steady and complete the waxing.



Crowns with molten attachment, the Steady and Vertical have been adapted to the mucosal profile.



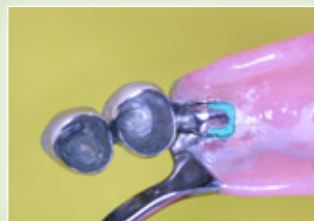
Retentive clip inserted on the cylindrical male. Model discharged with wax (be careful not to dirty the coping with wax before duplication).



Duplicate model in coating with reproduction of the Steady format and clip.



Framework molded, cover with the wax the Steady portion to have an insertion guide and stability when melted.



Framework placed on the Steady



Framework on the model. Stability is guaranteed even without milling, thanks to the Steady