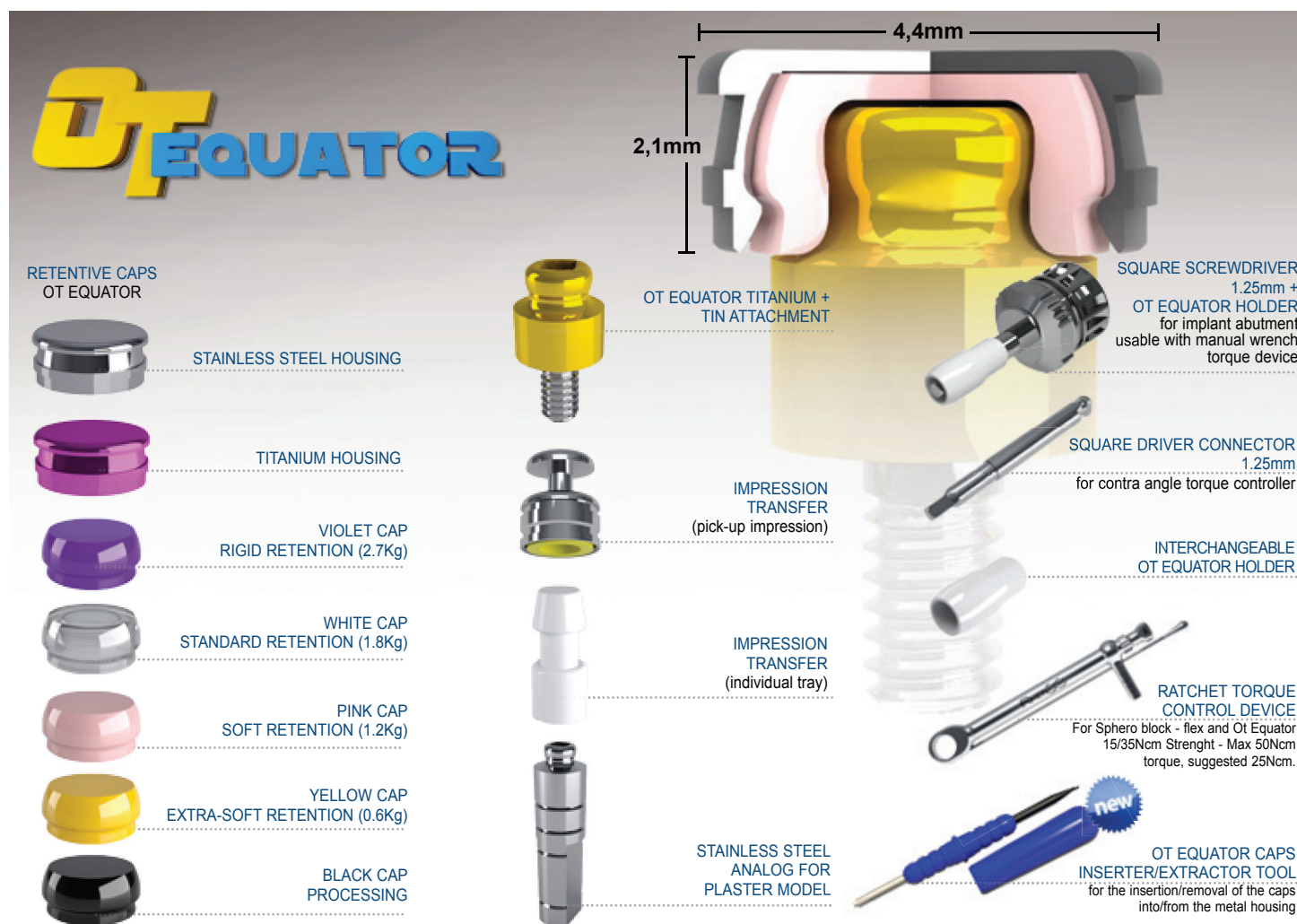


OT EQUATOR FOR IMPLANTS

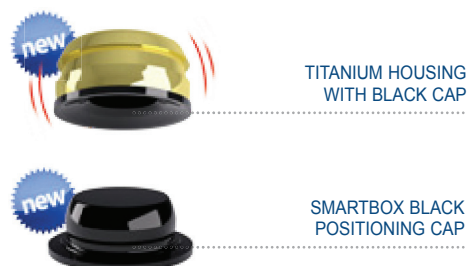
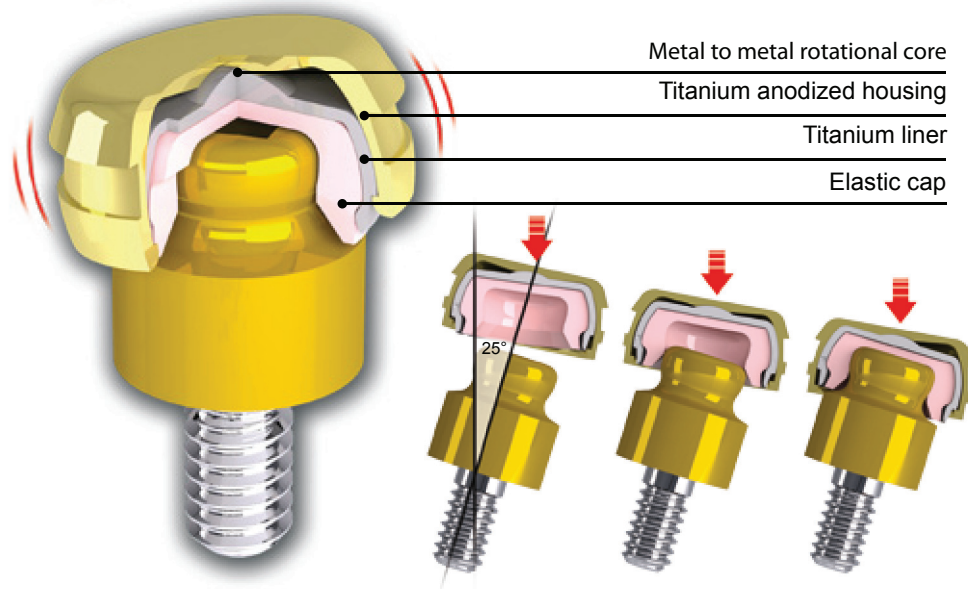
Low Profile Titanium Abutment



The unique design and exceptionally low 2.1mm profile of the OT Equator 4 in 1 System provides exceptional stability and superior retention when compared with other attachment systems. Due to its lower radius, OT Equator is indicated to correct divergence up to 25 degrees between implants without affecting the functionality of the elastic nylon cap. Caps are available in a wide variety of retention levels. ATTENTION; Where implant divergence exceed the maximum 25 degrees, Sphero Block and Sphero Flex are recommended case plan options. See Sphero Block and Sphero Flex page 40-41

Smart BOX

the self-aligning Ot Equator Housing

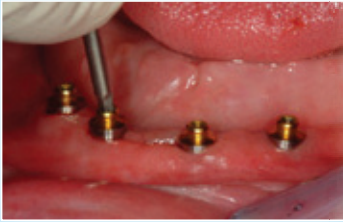


Passive insertion reduces trauma

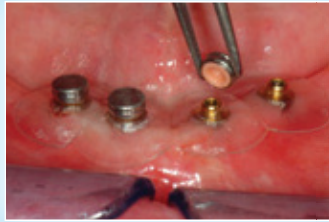
Correct divergency up to 50°

CLINIC

ATTACHING THE CAPS IN CLINIC



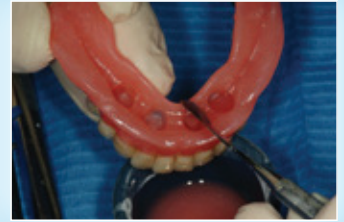
Select the OT Equator with the appropriate cuff height. Screw the OT Equator into the implant.



Place the protective disk over the OT Equator. Then, place the stainless steel housing with cap on the attachment.



Verify the positioning of the prosthesis before bonding the stainless steel housing.



On the prosthesis, fill the implant sites with a self curing resin and insert into the patient's mouth.



Remove the prosthesis and verify that the positions of the attachments are correct.



Remove the protective disks.



Carefully trim away the excess resin.



The completed prosthesis.

IMPRESSION TRANSFER



Place the impression coping on the OT Equator.



Insert the analog into the impression coping and pour the master model.

LABORATORY

BUILD UP THE FRAME DIRECTLY (for the full technique go to page 7)



Add sprues to the framework and remove it from the model. Be sure that the stainless steel housing does not remain inside.



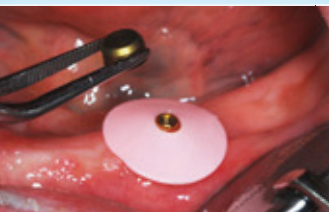
The metal frame with stainless steel housings bonded in place.

CLINIC

CHAIRSIDE PROCEDURE FOR SMARTBOX POSITIONING



Select the OT Equator with the appropriate cuff height. Screw the OT Equator into the implant.



Position the protective disk over the OT Equator.



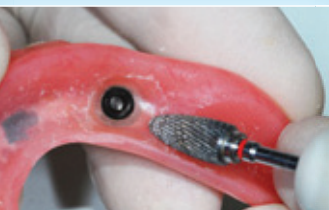
Fully engage SMARTBOX with Black cap securely onto OT Equator.



Fill the space corresponding to the housings with self curing resin. Insert the prosthesis into the final position.



Once the resin has cured, remove the protective disk.



Remove excess resin with bur and polish for passive connection.



Remove SMARTBOX black cap with cap extractor tool.



Using the cap insertion tool, select 1 of 4 Ot Equator female caps for desired retention.