

RECONSTRUCTIVE SPHERES - OT EQUATOR

Titanium + TiN coating



MULTIUSE
TITANIUM +
TiN COATING
more than 1600 Vickers

Available for any
implant system on the
market!

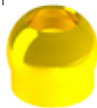
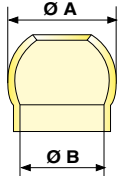
CONCAVE SPHERE

3 Sizes available:

Ø A	Ø B
2,5 mm	1,9 mm
2,2 mm	1,55 mm
1,8 mm	1,4 mm

OT EQUATOR

Size:	Ø B
2,5 mm	2,1 mm



- A - Sphere support
- B - Sphere holder
- C - Strip holder
- D - Spatula for applying cement inside of the sphere.

For existing cases with worn spherical attachments which no longer provide adequate retention, the **DR8 UNDERSIZED CAP** can be used in the early stages of wear of the male component. This elastic cap offers an inner dimension of 1.7 mm and 2.2 mm which is smaller than Rhein83 normal and micro size caps and can be used with standard Rhein83 stainless steel housings.

When ball attachments show excessive wear, the **CONCAVE RECONSTRUCTIVE SPHERES** are recommended as the best long term restorative option. The **CONCAVE RECONSTRUCTIVE SPHERES** restore the worn male to it's original size of 1.8 mm, 2.2 mm or 2.5 mm diameter. **CONCAVE RECONSTRUCTIVE SPHERES** are manufactured with a Titanium Nitrite coating and are rated over 1600 Vickers hard.

The chairside procedure for using the reconstructive spheres is fast, easy and provides an economical alternative to replacing the old restoration.



Aqua caps are shown

DR8 Undersized Caps are available in 3 levels of retention for normal and 2 levels of retention for the micro size.

CLINIC

Dental attachments, like most other mechanisms, are subject to wear out. Rhein83 produces spheres for restoring worn ball attachments which restore and stabilize the prosthesis in a single appointment. Reconstructive spheres are bonded over the worn ball restoring the attachment to its original size.

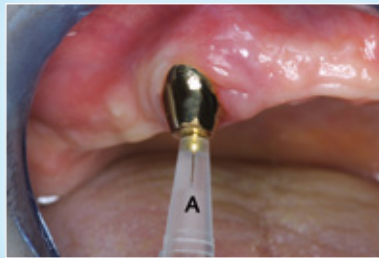
CONCAVE RECONSTRUCTIVE SPHERE RESTORING A WORN OUT SPHERE



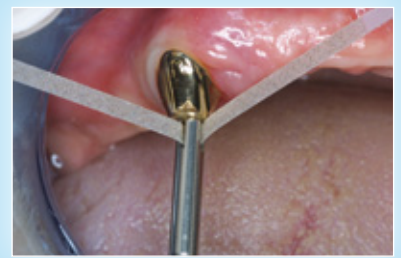
Insert the concave sphere into side A of the plastic tool. Fit over the worn out sphere in the mouth.



If the concave sphere does not fit passively, use a cylindrical bur (diamond or carbide) to slightly reduce the diameter. Check the fit again and repeat as needed.



Check the position of the concave sphere on the worn out sphere and finish by cleaning the two parts.



Additional surface can be removed by using side C of the tool. Insert a diamond strip into the notches, place the tool over the sphere and turn the manually.



Place a small amount of two-part self curing "metal to metal" resin inside the sphere.



Place the concave sphere over the worn sphere and wait for the resin to cure.



Once the resin has cured, remove any excess material.



The completed repair. The cap can be repositioned if necessary.

Rhein83 offers two types of reconstructive spheres; A solid sphere and a concave sphere. Both types are titanium nitrate coated with a Vickers hardness rated over 1600. The Concave Reconstructive Spheres are available in 1.8 mm, 2.2 mm and 2.5 mm ball diameter. The Solid Reconstructive Spheres are only available with a 1.8 mm ball diameter. The Concave Sphere is used for restoring worn ball attachments and the Solid Sphere is used for restoring ERA® and CEKA® type attachments.

SOLID RECONSTRUCTIVE SPHERE RESTORING A WORN OUT RING ATTACHMENT



The worn-out female ring attachment.



Apply a small amount of two-part self curing "metal to metal" resin on the bottom of the sphere. Insert the sphere into the attachment using the tool. Wait for the resin to cure.



The female attachment was converted into a male OT Cap Micro directly in the patient's mouth.

SOLID RECONSTRUCTIVE SPHERE RESTORING A WORN OUT OVERDENTURE BAR



Create a hole in the wall of the bar using a 1.6 mm ball drill.



Apply a two part composite to the shank of the sphere. Using the tool, insert the sphere into the hole. Wait for the composite to cure.

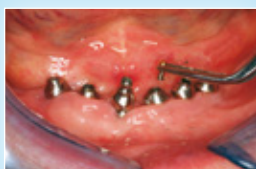


The sphere firmly cemented in place. The OT Strategy Cap can now be used in the prosthesis resulting in stability and retention.

SOLID RECONSTRUCTIVE SPHERE RECOVERY OF TITANIUM ABUTMENTS



A case with unknown titanium abutments. Worn out openings are present on top of the fixtures.



Solid Reconstructive Spheres are placed into the openings. A two-part self curing "metal to metal" resin is applied.



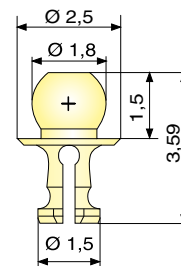
Retentive caps are positioned into the existing denture. The denture is now stable and secure.

Solid RECONSTRUCTIVE Sphere

MULTIUSE

SOLID
"RECONSTRUCTIVE"
TITANIUM +
TIN COATING
rated over 1600 Vickers

TO REBUILD ANY
"RING" TYPE
ATTACHMENT
SUCH AS: ERA® AND
CEKA®



SOLID SPHERE
Micro Ø 1.8 mm



TOOL
to hold the
sphere



OT CEM is a self and photo curing cement. It is designed for permanent metal to metal bonding in the use of attachments in prosthetic implant solutions. Recommended for the following products:

- OT CAP TECNO
- CONCAVE SPHERE
- SOLID SPHERE
- COPING COVER
- THREADED SPHERICAL ATTACHMENTS WITH THREADED SLEEVES



The SOLID RECONSTRUCTIVE SPHERES can be bonded to the inside of hollow attachments or those with a female ring such as ERA® and CEKA®

Reconstructive Spheres can be used to repair various attachments available on the market. These attachments can be found in many types of prosthesis including overdentures, implants, roots and frameworks. If worn out or broken, they cannot be repaired easily.

The SOLID RECONSTRUCTIVE SPHERES offer a fast and easy cost effective alternative, transforming a female ring attachment into a male Micro OT CAP attachment. This repair can be completed chairside in a single appointment.