

OVERDENTURE ATTACHMENTS - SPHERO FLEX - SPHERO BLOCK

Rotating & Stationary Ball Abutments For Divergence Correction

TITANIUM + TIN COATING PROVIDES 1600 VICKERS HARDNESS

Sphero FLEX

"SELF-PARALLELING" SPHERES

2.5 mm



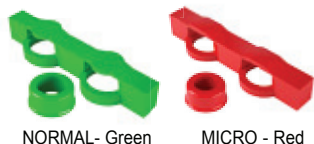
Sphero BLOCK

STATIONARY BALL 1.8 mm ABUTMENT

2.5 mm



OT Special BOX



NORMAL - Green

MICRO - Red



IMPRESSION COPING
Normal / Micro size

ANALOGS
SPHERO FLEX /
SPHERO BLOCK



PROTECTIVE DISK

UNIVERSAL KEY
+ HANDPIECE
CONNECTOR



STAINLESS STEEL AND TITANIUM HOUSINGS
Normal / Micro
for curing welding or bonding

ELASTIC RETENTIVE CAPS
Normal / Micro

Clear • Standard

Pink • Soft

Yellow • Extra Soft

Green • Elastic

Black • Processing

TITANIUM CAP
Normal / Micro

EXTRA RESILIENT CAPS

Gold • Elastic

Silver • Elastic Gummy

OT Classic BOX



BARS
NORMAL SIZE = Green + Yellow
MICRO SIZE = Red + Yellow

0° 7° 14°

DIRECTIONAL RINGS
(REQUIRED FOR LAB AND CLINICAL PROCEDURES)



CONNECTOR
For OT Box



MANUAL TORQUE WRENCH

For Sphero block - flex and Ot Equator
15/35Ncm Strength - Max 50Ncm torque,
suggested 25Ncm.

The Sphero Flex implant overdenture attachment is compatible with all implant systems currently on the market. Featuring a rotating ball with a diameter of 2.5 mm that is flexible to 7.5° in all directions. When used with a 14° directional ring, Sphero Flex corrects divergence up to 43° between two implants. Sphero Flex creates a passive path of insertion which reduces trauma to the implant.

Sphero Block is a "one-piece" milled stationary ball implant attachment. It is available in 2.5 mm and 1.8 mm diameters. Sphero Block provides exceptional stability and corrects divergence up to 28° between 2 implants. Sphero Block implant attachments are compatible with all implant systems currently on the market.

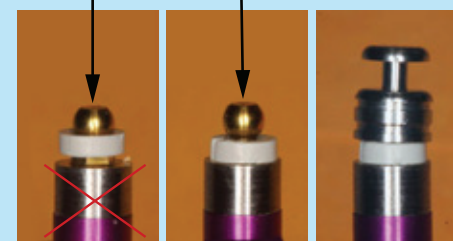
Sphero Flex and Sphero Block are manufactured with cuff heights ranging from 1 mm to 7 mm. NOTE: The Sphero Flex and Sphero Block attachments are available for all platform diameters.

CLINIC



DIRECTIONAL RINGS CORRECT PLACEMENT

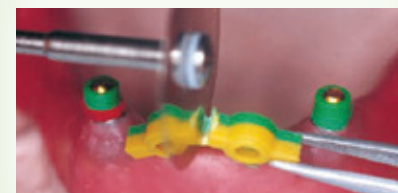
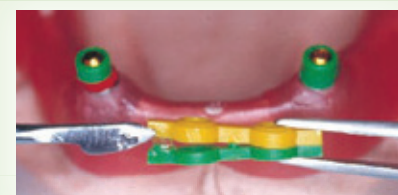
Before placing the impression abutment on the implant it is suggested to put a gray directional ring (for parallel systems) or a ring for angled implants if not parallel. This will keep the impression coping "on level" during the impression. The directional rings have only one direction of insertion.



Wrong placement

Correct placement

LABORATORY



3 EASY STEPS

1. Place directional rings (green and red are shown here) over the spheres establishing a level plane.
2. OT BOX positioners are placed over spheres to support box housing during framework fabrication.
3. After gluing the 2 OT BOX parts, cut and use the necessary pieces for the housing.

OVERDENTURE ATTACHMENTS - SPHERO FLEX - SPHERO BLOCK

Rotating & Stationary Ball Abutments For Divergence Correction

CHAIRSIDE PROCEDURE FOR POSITIONING THE CAPS



Screw the attachment into the implant. For best results, unscrew and screw the attachment 3/a times and then tight firmly.



Select the appropriate directional rings and place them over the spheres. Be sure that the ring is aligned with the hex and seated properly on the platform.



Once the directional rings have been positioned, it is advisable to remove the retentive caps and place a protective disk over the spheres. Replace the retentive caps in original position when finished.



Try the prosthesis in the mouth. Check to see if there is enough space for the retentive caps. Fill the holes with self-curing resin and position the prosthesis over the caps and spheres in the patient's mouth.



Once the resin has hardened, remove the prosthesis. Remove the protective disk along with any excess resin.



Finished prosthesis

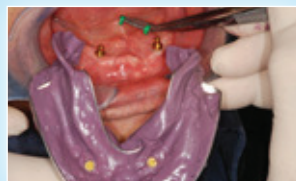
TAKING IMPRESSION TRANSFER



Place the directional ring over the sphere with the flat side facing down. Place the impression coping over the sphere.



Rotate the directional rings to achieve a common axis parallel to the occlusal plane and take the impression.



Remove impression. Directional rings must be removed from the impression and spheres.



Place the analogs into the impression copings and send to the laboratory for model fabrication.

OT BOX CLASSIC NORMAL - CAST REINFORCED ACRYLIC PROSTHESIS USING DIRECTIONAL RINGS



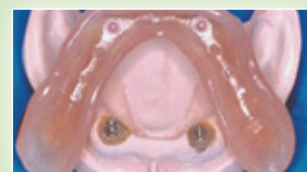
Place directional rings over the spheres. OT BOX is placed over the directional rings, ensuring that the horizontal plane is level. Connect with resin.



The constructed OT BOX substructure with reinforced wax pins. Sprued and ready for casting.



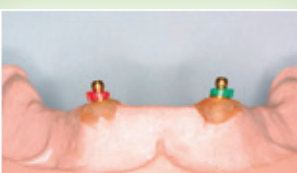
The cast substructure on the model. The metal reinforcement pins for each tooth are positioned according to the silicone mask.



Finished prosthesis with caps inserted in the cast OT BOX housings.



Screw the abutment into the analog. Be sure to use the abutment with the proper cuff height.



Directional rings are placed over the abutments and must be fully seated on the platform. Rotate rings until they are parallel in the same horizontal plane.



The nylon caps are inserted into the stainless steel housings and placed on top of the directional rings. Verify that the caps are still in the same horizontal plane.



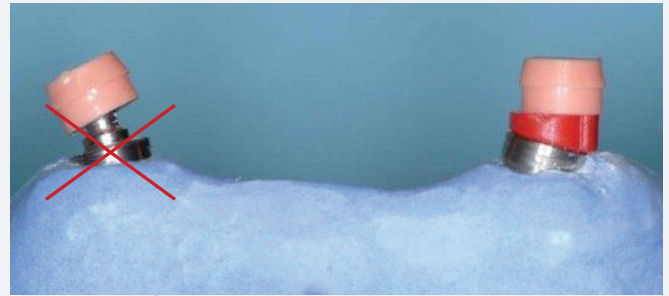
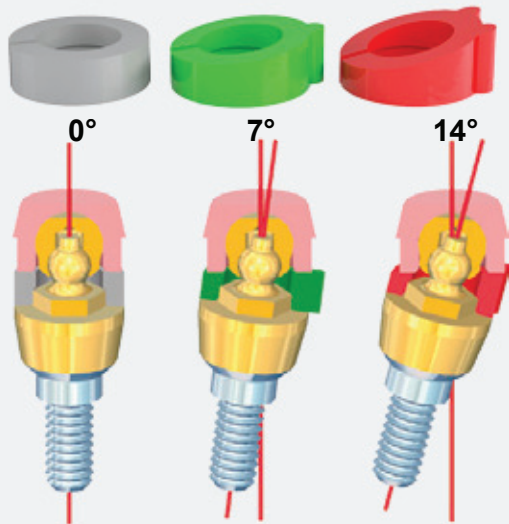
The finished prosthesis with stainless steel housings and retentive caps in final position.

IMPLANT OVERDENTURE ATTACHMENTS

Components and Accessories

DIRECTIONAL RINGS

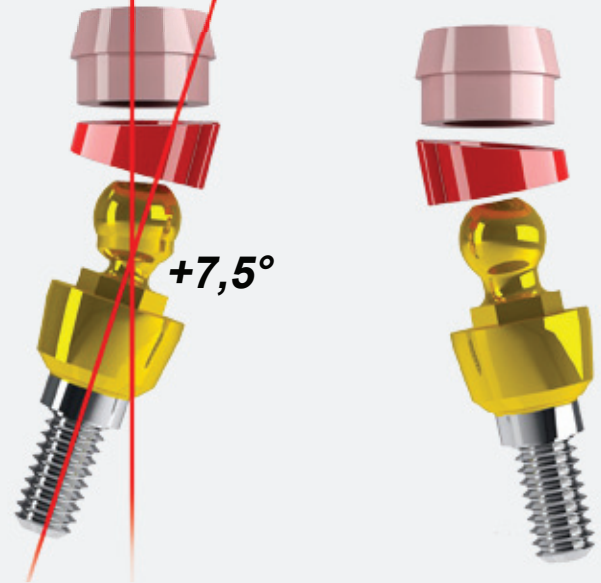
for angle correction



Sphero
FLEX

Sphero
BLOCK

Normo/Micro



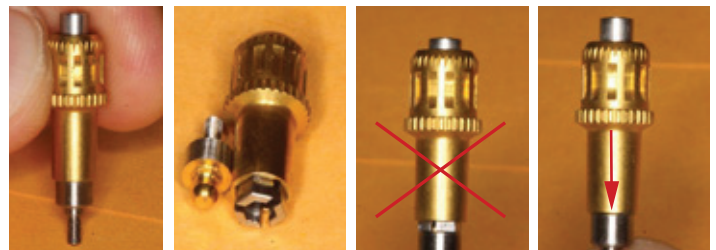
SPHERO FLEX - SPHERO BLOCK

In order to achieve a passive fit for the final prosthesis using the **SPHERO FLEX** and **SPHERO BLOCK** attachment systems, it is necessary to use **DIRECTIONAL RINGS**. When not used, there is a high possibility that the attachments will not seat properly into the prosthesis due to incorrect positioning of the caps. This mis-alignment will result in premature wear of the caps causing additional trauma to the implant. **SELECTION OF DIRECTIONAL RINGS:** The position and angulation of the implant will determine which directional ring will be used. For parallel implants, a 0° **DIRECTIONAL RING** can be used. For implants that have greater divergence, a 7° or 14° ring can be used.

Place the **DIRECTIONAL RING** onto the hex of the attachment with the flat side down. Be sure that the ring is fully seated. Next, place the retentive cap onto the sphere and rotate the **DIRECTIONAL RING** until the cap is parallel with the other caps and are in the same horizontal plane. This ensures that the retentive caps are correctly alligned inside of the final prosthesis.

INSTRUCTIONS FOR USE OF ABUTMENT DRIVER / WRENCH

Abutment Driver has a sliding mechanism that locks it onto the ball abutment. This needs to be fully engaged to properly tight the abutment without damaging the abutment. To dis-engage driver once the abutment is tightened in the mouth push down on the silver portion to loosen the driver from the abutment (Please screw and unscrew the abutment 3/4 times in order to achieve a fine adaption of the two threads). Then tight the abutment with a torque controller or the manual torque wrench.



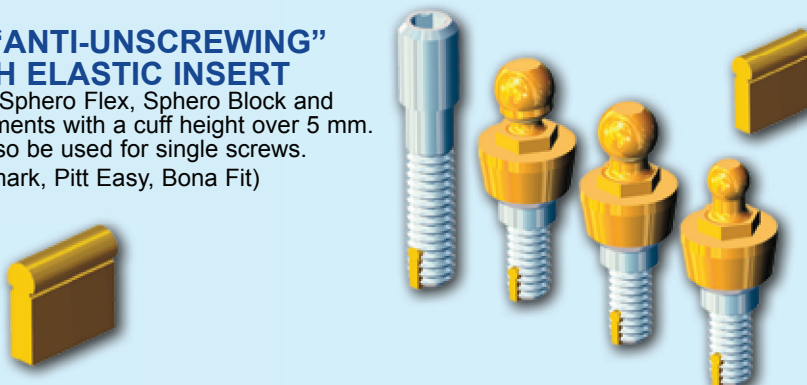
Clamping mechanism

Incompletely seated driver

Driver fully seated

UNIVERSAL "ANTI-UNSCREWING" SYSTEM WITH ELASTIC INSERT

Recommended for Sphero Flex, Sphero Block and OT Equator attachments with a cuff height over 5 mm. This system can also be used for single screws. (Core Vent, Branemark, Pitt Easy, Bona Fit)



ELASTIC INSERT

This component is manufactured from bio-compatible materials with an "elastic" memory. While screwing in the attachment, the insert is compressed. When the threaded attachment is fully seated, the elastic insert will expand and return to its original form, which prevents rotation and unscrewing of the device. The insert is applied at the manufacturing facility UPON REQUEST. It can be applied to any screw with a diameter greater than 1.8 mm.