



## COLORSTONE SH

### Super hard plaster, type 4

For saw-cut models, master models in crown and bridge technology, implantology

- plastic-reinforced
- excellent flowability
- hard and smooth with stable edges
- compatible with all impression materials

Technical data	
Mixing ratio	18 - 20 ml demin. water: 100 g powder
Processing time	approx. 9 min (22 °C)
Setting expansion	0.10 %
Compressive strength	> 65 N/mm <sup>2</sup> (24 h)
Colour	white, yellow, apricot, green, light grey, grey

5 kg (REF 5000-5)  
10 kg (REF 5010-5)  
20 kg (REF 5020-5)  
25 kg (REF 5030-5)

## COLORSTONE SH IVORY

### Super hard plaster, type 4

For saw-cut models, master models in crown and bridge technology, implantology

- high edge stability for saw-cut models
- plastic-reinforced
- excellent flowability
- compatible with all impression materials

Technical data	
Mixing ratio	18 - 20 ml demin. water: 100 g powder
Processing time	approx. 9 min (22 °C)
Setting expansion	0.10 %
Compressive strength	> 65 N/mm <sup>2</sup> (24 h)
Colour	ivory

5 kg (REF 5006)  
10 kg (REF 5017)  
20 kg (REF 5026)  
25 kg (REF 5036)

## COLORSTONE HST

### Thixotropic super-hard plaster, type 4

For saw-cut models, master models in crown and bridge technology, implantology

- stable consistency for build-up
- very low viscosity under vibration
- plastic-reinforced
- compatible with all impression materials

Technical data	
Mixing ratio	20 ml demin. water: 100 g powder
Processing time	approx. 5-6 min (22 °C)
Setting expansion	0.10 %
Compressive strength	> 65 N/mm <sup>2</sup> (24 h)
Colour	cream

5 kg (REF 5100)  
10 kg (REF 5110)  
20 kg (REF 5120)  
25 kg (REF 5130)



COLORSTONE FLUID

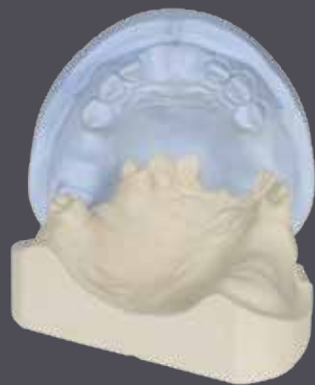
Base material, type 4, low viscosity

To prepare bases for arches in the split-cast technique

- easy flowing around pins and dental arch
- high final hardness and smooth surface

Technical data	
Mixing ratio	23 ml demin. water: 100 g powder
Processing time	approx. 6 - 8 min (22 °C)
Setting expansion	0.10 %
Colour	raspberry red and royal blue

5 kg (REF 5200-1)  
10 kg (REF 5210-1)  
20 kg (REF 5220-1)



DURAPLAST

Hard plaster, type 3

For antagonist models as well as master and working models in the model casting and acrylic technique

- ideal processing viscosity
- excellent setting expansion (comparable plasters, type 4)
- smooth and abrasion-resistant surfaces

Technical data	
Mixing ratio	30 ml demin. water: 100 g powder
Processing time	approx. 6 min (22 °C)
Setting expansion	0.15%
Compressive strength	> 30 N/mm² (24 h)
Colour	yellow and blue

5 kg (REF 5300-1)  
10 kg (REF 5310-1)  
20 kg (REF 5320-1)  
25 kg (REF 5330-1)



ARTIGIPS

Articulation plaster, quick

For quick positioning of models in the articulator

- also for positioning relinings and producing matrices
- ideal for orthodontic work
- very low setting expansion

Technical data	
Mixing ratio	30 ml demin. water: 100 g powder
Processing time	approx. 2 min (22 °C)
Setting expansion	0.08%
Compressive strength	> 20 N/mm² (24 h)
Colour	white

5 kg (REF 5400)  
10 kg (REF 5410)  
20 kg (REF 5420)  
25 kg (REF 5430)